

**KD-Validated Anti-CRABP2 Rabbit Monoclonal Antibody**  
**Rabbit monoclonal antibody**  
**Catalog # AGI1859****Specification**

---

**KD-Validated Anti-CRABP2 Rabbit Monoclonal Antibody - Product Information**

Application	WB, FC
Primary Accession	<a href="#">P29373</a>
Reactivity	Human, Mouse
Clonality	Monoclonal
Isotype	Rabbit IgG
Calculated MW	Predicted, 16 kDa, observed, 16 kDa kDa
Gene Name	CRABP2
Aliases	CRABP2; Cellular Retinoic Acid Binding Protein 2; CRABP-II; Cellular Retinoic Acid-Binding Protein 2; Cellular Retinoic Acid-Binding Protein II; RBP6
Immunogen	Recombinant protein of human CRABP2

**KD-Validated Anti-CRABP2 Rabbit Monoclonal Antibody - Additional Information**

Gene ID	1382
<b>Other Names</b>	
Cellular retinoic acid-binding protein 2, Cellular retinoic acid-binding protein II, CRABP-II, CRABP2	

**KD-Validated Anti-CRABP2 Rabbit Monoclonal Antibody - Protein Information****Name** CRABP2**Function**

Transports retinoic acid to the nucleus. Regulates the access of retinoic acid to the nuclear retinoic acid receptors.

**Cellular Location**

Cytoplasm. Endoplasmic reticulum. Nucleus. Note=Upon ligand binding, a conformation change exposes a nuclear localization motif and the protein is transported into the nucleus

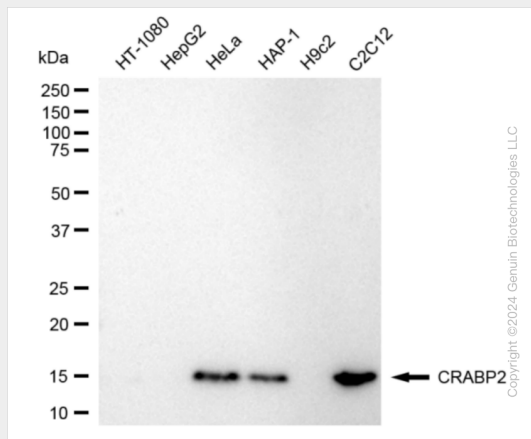
**KD-Validated Anti-CRABP2 Rabbit Monoclonal Antibody - Protocols**

Provided below are standard protocols that you may find useful for product applications.

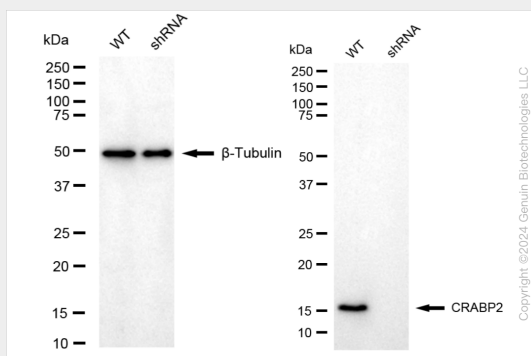
- [Western Blot](#)
- [Blocking Peptides](#)
- [Dot Blot](#)
- [Immunohistochemistry](#)
- [Immunofluorescence](#)

- [Immunoprecipitation](#)
- [Flow Cytometry](#)
- [Cell Culture](#)

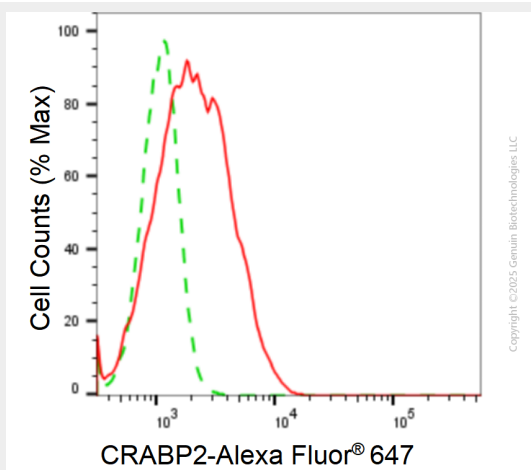
## KD-Validated Anti-CRABP2 Rabbit Monoclonal Antibody - Images



Western blotting analysis using anti-CRABP2 antibody (Cat#AGI1859). Total cell lysates (30 µg) from various cell lines were loaded and separated by SDS-PAGE. The blot was incubated with anti-CRABP2 antibody (Cat#AGI1859, 1:5,000) and HRP-conjugated goat anti-rabbit secondary antibody respectively.



Western blotting analysis using anti-CRABP2 antibody (Cat#AGI1859). CRABP2 expression in wild-type (WT) and CRABP2 shRNA knockdown (KD) HeLa cells with 20 µg of total cell lysates. β-Tubulin serves as a loading control. The blot was incubated with anti-CRABP2 antibody (Cat#AGI1859, 1:5,000) and HRP-conjugated goat anti-rabbit secondary antibody respectively.



Flow cytometric analysis of CRABP2 expression in C2C12 cells using anti-CRABP2 antibody (Cat#AGI1859, 1:2,000). Green, isotype control; red, CRABP2.